



In 65 countries, locally-made Green Maps chart eco and social change. Our open source icons and tools can transform your community, too.

At our homebase in New York City, we are also involved in creating places that belong on the Green Map.

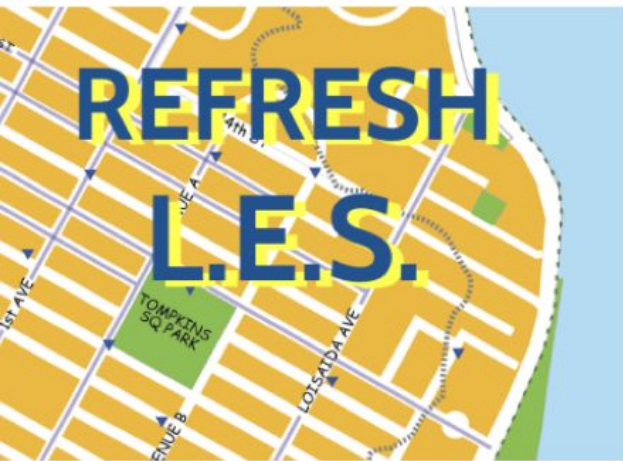
This Report alternates our recent local NYC projects and Green Maps addressing climate health.



NYC's #1 climate impact: Overheating

Refresh LES Green Map

We published Refresh LES, a guide to cool, healthy and free places in summer 2019



LES is Always Changing

Lower East Siders are naturally cool. With climate change on our doorstep, we must change too. This map highlights cool places to be comfortable without using your own air conditioner or fan. Almost everything on the map is free, except for items outlined in purple. Almost every cool spot is a chance to meet friends, relax, get fit or learn. Save energy, too!

The EPA says NYC averaged 2 heat waves per year between 1970-2000. This could rise to 7 per year by 2050. 10% of all global electricity is used for fans and air conditioning, according to IEA.org. Saving energy reduces the greenhouse gases that cause climate change and heat island effect plus it helps improve our air quality. Our worst climate habits & antidotes:

Fly far	Burn Fossil Fuel	Cars + Congestion	Eating Meat (esp beef)	Create Waste	Deforestation	Gentrification	Poor Land Use	Apathy
up road, take bus	consume solar/land	with MTA, ferry	up plant-based	plant & cultivate	preserve community	vote & organize	share fan people & shout	

Hot Tips for a Cool Home

Window blinds, shades or curtains can reduce heat up to 80%. In the evening, open curtains & set up a fan to help draw in the cool evening air.

Ventilate to reduce humidity, too. Low-cost do-it-yourself tips here: diy.natural.com/indoor-humidity-in-house/

If you have AC, use a timer. Cook early in the day.

Short cool showers or sponge baths can revive you fast. Does your cable box show the time? Your provider can trade it free for newer, cooler box. Saves \$50 a year on your utility bill!

Going out? Bring a hat!

Pick up free maps: GOLES Direct - 173 Ave B MORUS - 156 Ave C Seward Park Library - 192 E 5th St Request copies 212.674.1631 Get map PDF - bit.ly/coolLES

2019 NYC's & Flood Zones

LES Emergency Cooling Centers: Call 311 or online: bit.ly/teehot19

Stay Hydrated: Reusable Water Bottles are healthy, cheap & cool. Leave a full one in your fridge, always ready to go!

Check on Neighbors: Elders, young children, and people with health problems are most at risk.

Sandy Flooding is blue

THE NEW YORK CITY COMMUNITY GARDEN DISTRICT
Map by Lesade United Neighborhood Gardens

REFRESH L.E.S.
A GREEN MAP OF COOL & FREE PLACES LOWER EAST SIDE NYC • SUMMER 2019

Take it easy! Be cool and save energy on NYC's Lower East Side

REFRESH L.E.S.
created by Green Map NYC with support from:

LES Lower East Side Recovery Group
GlobalLiving: gats.org/39907
Download this Post: bit.ly/coolLES
GreenMapNYC.org: apple@greenmap.org
Green Map System: www.greenmap.org

13 CLIMATE ACTION

11 SUSTAINABLE CITIES AND COMMUNITIES

Swimming Pools (public, bring ID, lock & towel!) bit.ly/pools19 Hit the Beach! City: bit.ly/nyc-beach Regional, by train: bit.ly/beachrock
Kid-friendly park: [Speakers & pop-up pools](http://bit.ly/speakers) (inspect before use, footwear recommended)

Shady relaxing spots: Free wifi in parks, or Link along 1st & 2nd Ave, 14th, Bowery, Orchard

Libraries are a cool option that expands your mind through books, media and programming. [NYPsl.org](http://nypsl.org) Library cards are free.

Bikes are a breeze! Get your own or use GiBike (as low as \$5 a month). Stations are: bit.ly/drink19

How's the water at this fountain? bit.ly/drink19

Summerstage at the Amphitheater - culture spots! NYC Parks events: nycgovparks.org/events

East River Park is a haven - what will we do during the years while it's closed, razed and rebuilt as a flood barrier? Explore new-to-you city parks, bright gardens and shady spaces. 53 Community Gardens on the reversal! Go wild: naturedoesnyc.org/map

Essex Market crossed Delancey. Seats upstairs. Movie theaters are chilly!

It's cool inside: community centers, houses of worship, rooftop gardens, lobbies & cafes, but may limit entry or \$. Put your faves on the map! POs (privately owned public spaces): apps.nyc.gov

IDNYC card is your free ticket to museums & cool places across the city: nyc.gov/idnyc
Events: les.nyc/events - nycgo.com

Ferries! Head south: Staten Island is free. Governors Island ferry is free on weekend mornings or anytime with IDNYC. Ferries at Connaught and Shave, some as MTA fare: Go to the beach! Go to Ickal Go to Brooklyn Bridge Park! nycparks/adventure

Walk around B-Ball City to Pier 35 EcoPark. Continue to shady Esplanade, play & enjoy the view.

Explore new parts of the city & be a tourist! "Stationation"

Climate change demands more from us. Take part in political action and protect climate policy. Vote! Support the Green New Deal. Pitch in on the restoration of natural systems that protect us all.

Making the city greener reduces urban heat island effect and increases well-being. Take care of nature's air conditions: street trees (nycgovparks.org/trees/tree-care). Join community garden and park clean-ups, take care of rain gardens & cultivate green spots near home. Not cool? Dog pee on trees... Clean up after pets. Recycle your trash. Trust the city with love, like it's your own home.

Fan Club: We were inspired to map cool places by the "Cool Share" project. Created by Ding Dong Signposts and volunteers, it was successful at saving energy and connecting people. It became a national program! CoolShare.jp

Legend:
Parks
Historic Shoreline
Bike Lanes
Not Free
Bike Share
Drinking Fountain
Websites are blue

NYC's #1 climate impact: **Overheating**

Our director campaigned for 1,000 street trees in 2019. She helped plant the first two native trees that year at Green Map's "**Sustainable Development Goals in the Park**" event. Wendy has joined the ESCR Greening Taskforce, taken part in tree care and documented empty tree pits on the Lower East Side.

So far, 500 trees have been added to the Lower East Side Community Tree Canopy!

LES Community Canopy



Green Infrastructure tour map

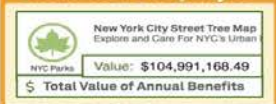
Self guided Green Map for Open House New York, 2020



Sandy bail-out at MoRUS



Bioswales in 2021, maybe



Sandy Surge at E8th & C



Big U upland greening



Overpasses to Park

guide by Wendy Brawer for



155 Ave C: Start at the **Museum of Reclaimed Urban Space**, where Sandy filled the cellar -- now, a sump pump keeps it dry. Through 2020, MoRUS Museum exhibits include Green Map's *How Green Is My City*. GreenMap.org/2020exhibit Open Tues and Thurs-Sun 11-7PM. morusnyc.org

E9th & Ave C: **La Plaza Cultural** community garden has rain barrels, ponds and french drains to catch and direct stormwater, and for resiliency: inclusive participation, solar, composting & native plants. View through the fence if gate is closed. Someday, there will be a bioswale (rain garden) out front, via GardensRising.org. Lush **Garden 9C** is just across - this is the epicenter of **NYC's Garden District**. 🌱

E9th & Ave B: **#Loisaida Open Streets** for social distancing (bit.ly/LESOpenStreets). Street trees = green infrastructure.

E9th & into Tompkins Sq Park: Wet at high tide until this land & areas east were drained & developed. Enjoy park. See bit.ly/evrivers19 to review the historical map of subterranean streams (aka tidal creeks) and today's mysterious flows.

E8th follow underground waters East past more **community gardens**. E8 & Ave C had dramatic high water, as seen in iconic photos. You'll pass **LES Girls Club** at E8 & Ave D. It has a great stormwater absorber, a rooftop garden that feeds pollinators and people. **Big U Plan**, 2014, has 'upland' green infrastructure of green roofs, street trees etc, as yet unbuilt.

Ave D - go South two blocks: pass **NYCHA campuses** where FEMA is repairing Sandy damage, elevating and fortifying, but silo'd off from other resiliency planning. bit.ly/nycha-fema

E6th - go East and over the FDR Drive into the narrow **East River Park**. Say goodbye to the popular **new track** as virtually all structures and all living things will soon give way to the \$1.45 billion **East Side Coastal Resilience** project. ESCR will raze these acres, then raise a low-maintenance park atop an 8-10 foot seawall to prepare for 2050. nyc.gov/escr. ESCR includes major sewer investment but does not separate the sources of 'combined sewer overflow' that pollute our waterways in stormy weather. **East River Park Action** is one of the community groups seeking a less destructive, greener plan that works with nature, provides interim flood protection and supports expansion of the park over the FDR Drive.

East Village & Riverside Green Infrastructure

cycling / walking tour with Green Map NYC

Self Guided Tour for Open House New York 2020

How has the East Village changed since Sandy?

With a high-water mark that reached across a beloved park and deep into the community, what's happened since 2012 to mitigate climate change? From Tompkins Square Park to East River Park, this green infrastructure cycling / walking tour will bring you into cultural and community spaces. With the Pandemic clarifying our collective 2020 vision, this tour shows how social justice, natural systems and green infrastructure can - and must - work together.



2019 NYC's 6 Flood Zones



2013 Sandy on CB3 map



1874 see bit.ly/vielemap

Tompkins Square Park 1609+1867: map provided by foundation specialists

Continue South for eco-innovation. Stop just below the historic Amphitheater by **Lower East Side Ecology Center's** **compost yard** to see all the good soil that is shared with nearby parks, school yards & gardens. The yard engages public action, reduces waste, captures carbon & significantly increases nature's capacity to thrive. Sadly, this yard, nearly 1,000 CO2-saving trees and the bike-friendly Greenway will be gone in weeks. This health-imparting park will be a construction zone for years.



**designed for & with local mapmakers
in partnership with the GIS Collective**

Details and videos: GreenMap.org/stories/ogm2

Climate Action: OGM2 - a flexible resource for local mapmakers



Now in beta - **OGM2**
new.OpenGreenMap.org

Mapping platform features:

- Green Map Icons
- Chart local Points, Routes and Areas
- Add your own icon sets or base map
- Flexible webapp works on any device
- Engage the public with Campaign tool
- Export & import data
- Embed OGM2 maps on your website
- Open development by the GIS Collective

Use OGM2 to make a Green Map of your city

Health impact: Covid Pivot



<http://GreenMap.org/recoveryicons>

Pandemic Icons!

Created in 2020, this concise set of icons helps communities recover & regenerate local culture once the storm has passed.

Use them on OGM2 and other Green Maps, signs, murals, social media, apps, etc. to help guide the way to local recovery resources.

#RecoveryIcons

In support of community recovery, use these icons on your local maps, apps, social media, signs, murals, and with our new mapping platform

Use flexibly to meet local needs

GreenMap.org/recoveryicons

#RecoveryIcons

PUBLIC HEALTH

RECUPERATE

REGENERATE

Recovery Icons					
<p>Testing Station</p>	<p>Critical Supplies</p>	<p>Hospital</p>	<p>Wellness Resource / Alternative Health</p>	<p>Unhealthy Spot / Quarantine</p>	<p>Wash Hands Here</p>
<p>Farmers Market / Local Market</p>	<p>Community Farm / Coop Garden</p>	<p>Food Gathering Site</p>	<p>Farm with Animals</p>		
<p>Social Service</p>	<p>Food Bank / Emergency Food</p>	<p>Translator / Interpreter</p>	<p>Temporary Housing</p>	<p>Refugee Area / Refugee Safe Space</p>	
<p>Physical Distance Design</p>	<p>Mask Up - Crowded Place</p>	<p>Bicycle Site</p>	<p>Wheelchair Accessible</p>	<p>Pedestrianized Street</p>	<p>Free Speech Zone</p>
<p>Community Garden</p>	<p>Public Space / Square</p>	<p>Bird and Wildlife Watching</p>	<p>Park - Open Space - Eco Active Area</p>	<p>Cool Spot</p>	<p>Protected Habitat</p>
<p>Lively Spot</p>	<p>Culture without Crowding</p>	<p>Outdoor Dining</p>	<p>Volunteer Site / Coordinator</p>	<p>Eco-spiritual Site</p>	<p>People of Place / Indigenous Culture</p>
<p>Local Business</p>	<p>Resilience Training / Development</p>	<p>Employment / Business Support</p>	<p>Social Enterprise / Co-op</p>	<p>Green Technology / Green New Deal</p>	<p>Sad Sight / Needs Attention</p>
<p>Mutual Aid</p>	<p>Recovery Superhero</p>	<p>Community Collaboration</p>	<p>Eco-Justice Organization</p>	<p>Memorial / Site of Conscience</p>	
<p>Public Restroom</p>	<p>Wifi Spot</p>	<p>Public Charging Station</p>			

Recovery Resources

NYC's historic Lower East Side

Out for a quick walk in Spring 2020?

-  Physical Distance Design
-  Bird & Wildlife Watching
-  Social Services
-  Wifi & Charging
-  Citibikes
-  Bike Shops



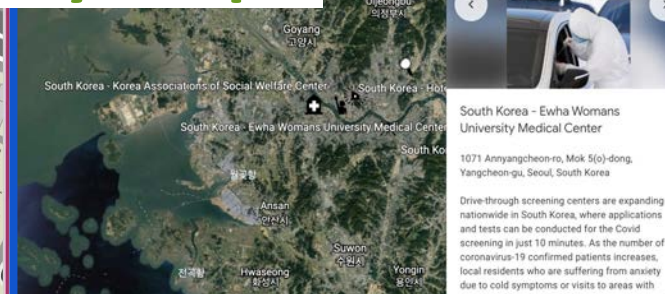
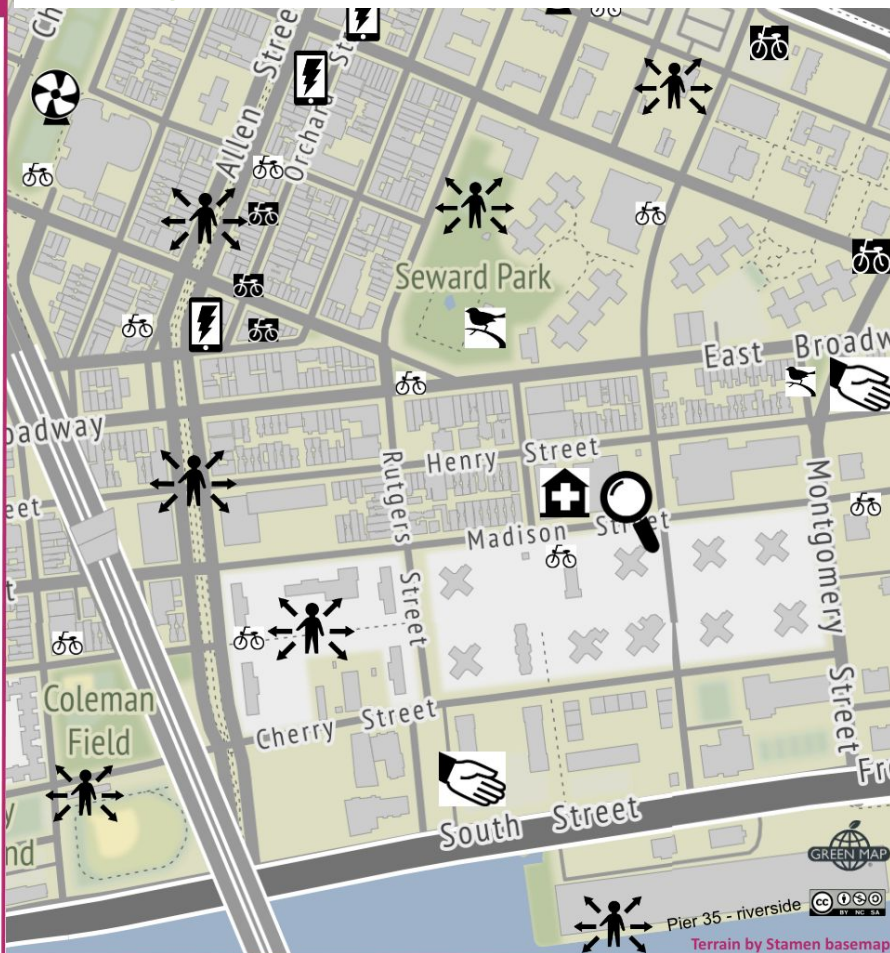
To help communities in the COVID era, Green Map is sharing Recovery Icons. Check it out:

GreenMap.org/recoveryicons



#RecoveryIcons

NYC, Cuba & World Recovery Maps



Pace Global Covid Map

The process of updating and enriching the Epidemiological Green Maps of Popular Councils in #Marianao, with a member of the Municipal Defense Council, the possibilities offered by using the #MapaVerde tool for context transformations and conception of contexts Local solutions to community upgrading.

[Hide Translation](#) - [Rate this translation](#)



Climate & Health: new Local Food icons for OGM2



New! April 2021

Let's support all aspects of local food and sustainable production with a new icon set

Now a Draft, comment at GreenMap.org/support-local-food

	Farm	Encompasses small-scale city farm to full-size rural farms that are organic, biodynamic, regenerative or utilizing other sustainable methods. Can be used to indicate 4H demonstration farms, agriculture schools or food security resources and networks.
	City Farm	Any size of agricultural farm established in urban or residential areas, outdoors, on the roof, indoors, even in a schoolyard. Can be cooperative, commercial, educational, therapeutic, demonstration, etc.
	Allotment Garden	Garden with assigned plots shared and maintained by local residents in urban areas. There may be a waiting list, limited availability, fences and/or a shed with tools, water, etc, but they are not residential. Generally the food is for personal consumption but may also be shared with neighbors. Also known as Pea Patch.
	Community Garden	Often planted on public or formerly abandoned land and run by volunteers who cultivate food, flowers and closer relationships to nature and one another. Sometimes fenced and locked or threatened by development, but generally open to all participants, raising the quality of life in the community, and improving habitat, air and soil quality at the same time.
	Permaculture	Short for permanent agriculture, this sustainable system of agriculture and settlement is practiced all over the world. Permaculture Design can be applied to various types of projects. Eco-agriculture is a more general term.
	Farm Animals	Place where the public can see domesticated animals carefully tended, ethically cared for and sustainably raised, including gardens with chickens and rabbits, police horse barns, fish ponds, etc. with consideration to animal protection, careful waste treatment, etc.
	Farmers/Local Market	Sells regionally grown produce. May be organic or traditional foods, sold in a lively permanent or temporary setting. Food does not travel far, so it's fresh and nutritious. Shopping here directly supports small family farms, local economies and a greener countryside.
	Organic / Local Food	Local food that is grown near to where it is consumed, so it has fewer 'food miles' that decrease freshness and increased shipping and other ecological impacts. Organic food is grown without pesticides (biocides), genetic modification or synthetic fertilizers. No chemicals or waxes are added after harvesting. Usually prepared in a way to maximize the nutritional value; may include fair trade or direct trade practices.
	Healthy Dining	The emphasis is on wholesome, healthful, fresh foods. Vegetarian and vegan (no animal products); gluten-free, meat and dairy products from ethically treated animals, without genetic modifications or factory farm practices. Endangered fish, marine and other species are not served. Cooperatively-owned cafes, cafes that grow their own food, "Slow Food", traditional or special local cuisines.
	Picnic Spot - Outdoor Dining	Enjoy a meal, drinks or snack in a park, an outdoor cafe, food truck area or picnic zone. Can be temporary cafe seating or an ongoing location designed for physical distancing.
	Artisanal Food / Local Flavor	Cuisine of a particular place, often made from local ingredients. These foods can re-introduce traditional food preservation, nutrition, indigenous and gourmet practices. Often seasonal, hand-made and in limited quantities.
	Landmark Dining/Pub	A locally famous cafe or restaurant or brew house that is part of the culture of the community.
	Farming / Cooking School	Formal or informal, in-person or online, this is a cafe, school, farm or garden that offers education classes and workshops to the public, ranging from learning to cook local food, to growing, preserving, or managing food (even composting).
	Farm Stand	Produce is available, often outdoors, with payment on the honor system, or in a more conventional way
	Composting Site	Place where food waste, leaves, garden and lawn cuttings are biodegraded into rich new soil. Can include large-scale or demonstration projects, food-scrap pick up or drop-off sites, or places to buy locally produced compost, or to get information, worms and resources for indoor and garden composting.
	CSA	Locally supported agriculture economy subscription system supporting local farmers. Can be used to indicate organizations that make the link between urban communities and nearby farmers through community-supported agriculture (CSAs or box schemes).
	Nursery/ Garden Shop	A place where seeds, young plants and trees are grown and offered for sale or distribution. Tools, furniture, mulch, books, planters and related products are available.
	You-pick	A farm or garden that allows customers to pick their own produce, and often, it is family-friendly recreation. Also known as Pick-your-own.
	Community Kitchen	Supporting food processing and storage, this is a kitchen that meets local standards and is accessible to community members to prepare locally grown food. Often supports local food start-ups & microbusinesses.
	Food Bank	Food banks assure food is not wasted and hunger is reduced by providing low or no-cost food for low-income or displaced people. May serve meals, provide ingredients for home cooking or deliver to household people, or be a single community fridge or other forms of mutual aid.
	Food Gathering Site	Pick and gather edibles, glean fallen or unwanted fruits, go fishing, forage on public land or harvest wildcrafted herbs and foods. Be responsible. Consider ecological concerns, delicate habitats, and waste issues when using this icon.
	Bee Keeping	The cultivation of honeybees, mainly for pollination and the production of honey, but also to support healthier bees. Local honey is said to have allergy immunity benefits. Wild bees can be supported with 'bee hotels' and all bees depend on pesticide-free pollinator-friendly and native plants for their food.
	Edible Landscape	Public area or streetscape where edible plants are grown and available for anyone to eat. The landscape may be cultivated by the municipality, a Transition, mutual aid, community or non profit group, local property owners, volunteers or individuals. May be used as a point, line or area.
	Hydroponic/ Aquaponics	Growing plants in water, either horizontally or vertically. Aquaponics are a symbiotic system which grows plants, sea vegetables and fish using the same water, also known as aqua-farming - there's aquaculture in the sea, too. Traditional as well as high tech production, not always a regenerative method of production.

Climate impact: **Sharing our Icons with Newtown Creek Alliance**

NCA
NEWTOWN CREEK ALLIANCE



Climate impact: Transforming Disused Infrastructure



DutchKillsLoop.org

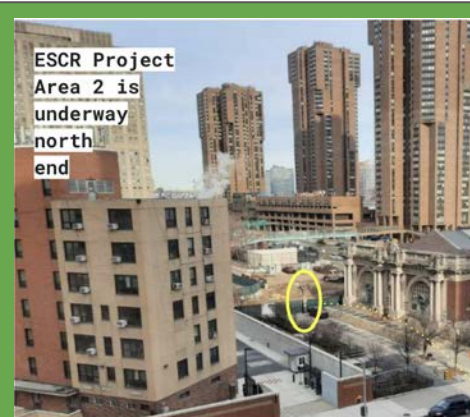
NCA
NEWTOWN CREEK ALLIANCE

Smiling
HOGS HEAD
Ranch



Interval
Projects

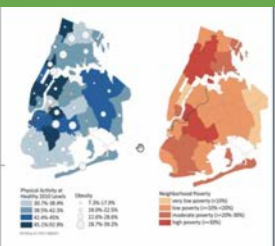
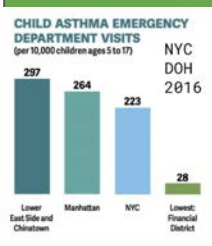
Climate & impact: LES Breathe - Air Quality & the ESCR project



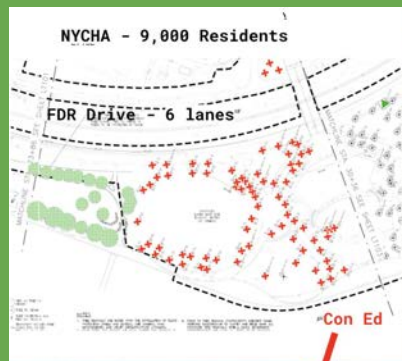
- (4) air/vibration/noise monitors at Asser Levy Rec Center
- (2) air/vibration/noise monitors on Ave C south of 23rd Street
- (2) vibration monitors by Solar One



2020's - a million tons of fill are being barged in and then trucked around to make it 8 feet high.



Asthma, physical activity, poverty - not news
Covid compounds issues



NYC Environmental Justice Map, 2021 - By April's end, you can respond to nyc.gov/ejstudy



Covid hospitalization 4-1-21 NYC DOH



Loss of trees compounds delay in Big U 'upland' planting. No stormwater bioswales yet



Climate & impact: Monitoring East River Park Green Map



Air Quality Monitors

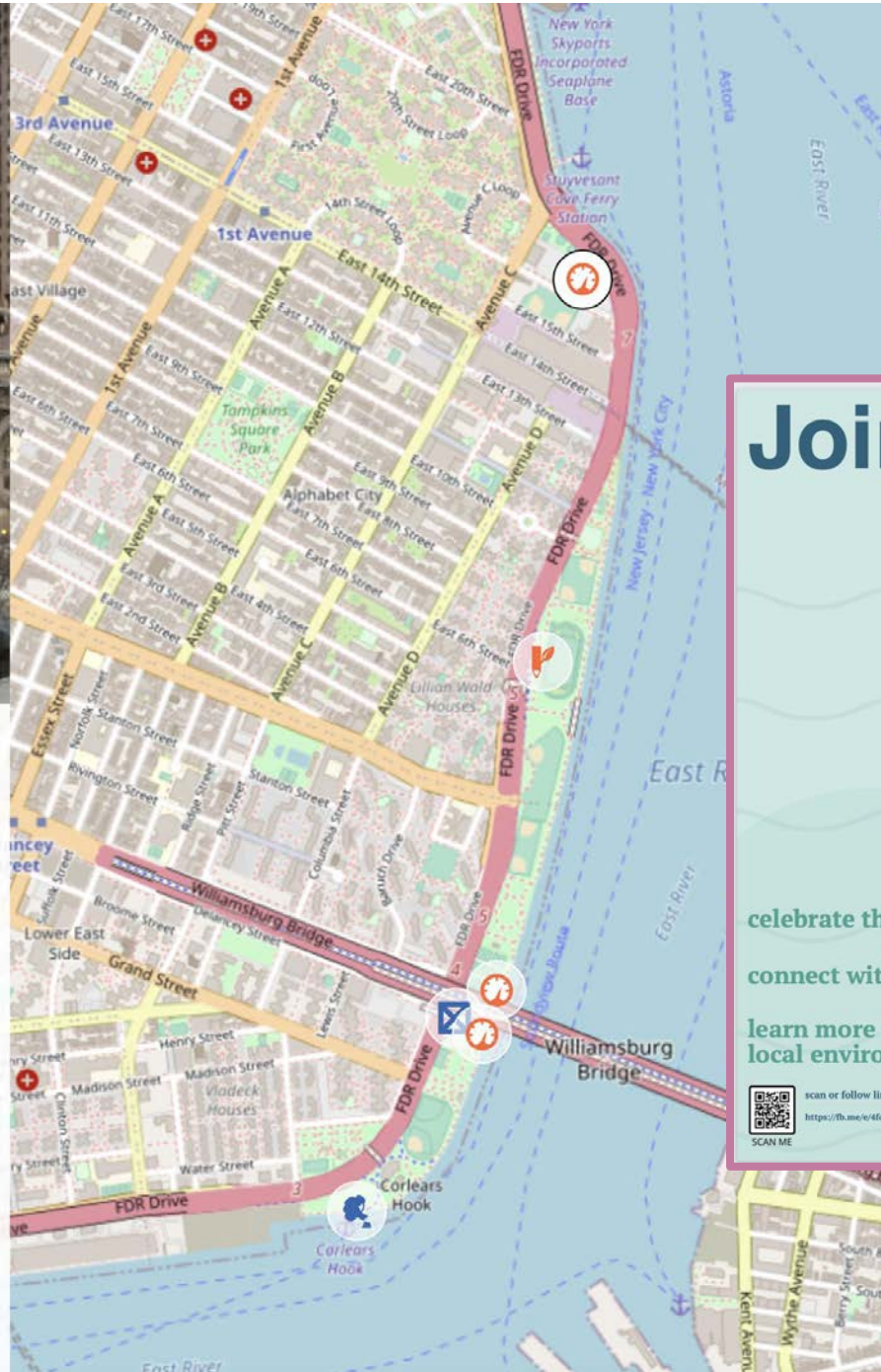


Show more

Edit

Construction in ESCR Project Area 2 is underway and as of December 2020, there are:

- 4) air/vibration/noise monitors at Asser Levy Recreation Center (see photo)
- (2) air/vibration/noise monitors on Ave C south of 23rd Street
- (2) vibration monitors by Solar One



Add to the map on April 17th or at bit.ly/421erp

Join US in the park

for a day of celebration community activities games & fun

Saturday, April 17th in East River Park
check-in at Seal Sculpture Park in front of Fireboat House

celebrate the park

connect with organizations

learn more about your local environment

along with our friends

- LES Ecology Center
- SolarOne
- Friends of Corlears Hook Park
- GOLES
- East River Park Action
- Green Map
- Earth Celebrations +Pool
- LES Breathe
- _Around and more!!



scan or follow link to event!
<https://fb.me/w/46q6o2QUM>

SCAN ME

Climate & Health impact: Redesigning Streets for People

Supporting a walkable Avenue B and the Loisaida Open Streets Community Coalition



Bike Culture Center



Health & climate impact: **Go Local! concept-in-development**

Open Space Gateway and Active Tourism Campaign

Designed to support local eco-tourism and active living, this campaign provides a gateway to local parks and open spaces. It's especially important now as nature is so healing and so many of us have yet to fully explore the wonderful environmental diversity that surrounds us.

All Open Space is ideal for connecting with nature:

City Parks

Cemeteries

Gardens

Campuses

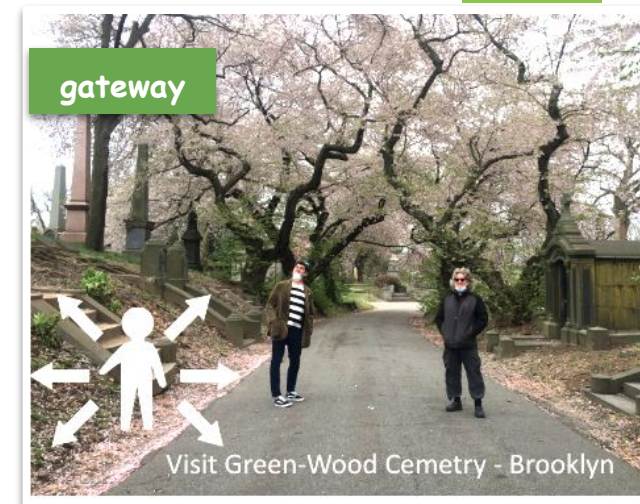
Reused infrastructure projects

POPs

#OpenStreets

At an 'active tourism' Open Space Gateway, everyone can find out about the best of the city's landscapes, biodiversity, outdoor programming, social and special places that are free and open to the public, when to go and safe ways to get there.

More about this healthy-for-all-ages concept is at bit.ly/gateway-2020





Be solutionary!
Promote climate health and green
living in your home place

Green Map System & Green Map NYC
GreenMapNYC.org

Wendy Brawer, Director
web@greenmap.org
+1 212 674 1631



Engage with a
locally-led
global sustainability
movement

GreenMap.org

